



# INSTRUCTION MANUAL

## Primo 60/70



[www.juwel-aquarium.com](http://www.juwel-aquarium.com)

# Introduction

Thank you for choosing a JUWEL Aquarium product.

Our products represent over 50 years experience in the manufacturing of aquariums and their accessories applying most modern production techniques bringing together the JUWEL Aquarium system, which is both easy to use and simple to maintain.

Please read this instruction manual carefully and completely to make sure you have received all components before setting up the aquarium. Please observe the safety instructions and maintenance guidelines given in this manual.

This instruction manual has been carefully prepared to provide you with accurate and complete information. All efforts have been made to ensure that the information given is correct. However, we cannot accept responsibility for printing or other errors. Technical details are always approximate and are not warranted characteristics and may be subject to change without notice.



## SAFETY INSTRUCTIONS:

- This appliance can be used by children aged from 8 years and above and persons with reduced physical, sensory or mental capabilities or lack of experience and knowledge if they have been given supervision or instruction concerning use of the appliance in a safe way and understand the hazards involved. Children shall not play with the appliance. Cleaning and user maintenance shall not be made by children without supervision.
- The power plugs of the electrical devices must not become moist. Connect the power plugs to the power supply at such a height that the connection cable forms a loop which would enable the water to drip down.
- At all times, only operate the electrical devices for your aquarium (lighting, heater, pump etc.) using an earth leakage circuit breaker (EL circuit breaker) with a maximum tripping current of 30 mA. If the socket that you are using in your home installation is not safeguarded with such a circuit breaker, please use a commercially available power strip with an integrated earth leakage circuit breaker.
- The electrical devices may only be operated in rooms.
- Pull the power plug of all devices operated in water before coming into contact with the water.



This product fulfils the guidelines issued by the European Union (EU) and is therefore entitled to carry the CE mark.  
[www.juwel-aquarium.de/en/declaration-of-conformity/](http://www.juwel-aquarium.de/en/declaration-of-conformity/)

## Setting up the Aquarium

**We have produced your JUWEL Aquarium with the utmost care using most advanced production techniques. Extra strong packaging has been used to prevent damage to the aquarium. Please note however, that your aquarium has been transported and handled several times prior to reaching its final destination. We recommend therefore, that you test the aquarium for leaks in a suitable area (e.g. garage), by filling it with water and checking it very carefully.**

Having made your checks, you should select the most suitable and desirable position for your aquarium. The position selected should have an even and level surface and should be able to support the weight of the filled aquarium. In order to prevent excessive algae growth, we recommend that you select a position that is not exposed to direct daylight.

We strongly recommend that the appropriate JUWEL Aquarium cabinet is used. They have a water-repellent surface and they have been made to match the dimensions and to bear the weight of the filled aquarium. The cabinet must be positioned on a level surface. The JUWEL Aquarium is built with a special bottom frame for security. The aquarium should be placed directly onto the cabinet. **DO NOT** place any additional support, e.g. polystyrene, under the aquarium since this is not necessary with our aquariums.



### Notice:

- Please ensure that any air stones or similar aeration devices used are placed in the centre of the aquarium. The use of such equipment may cause water to splash and condense on the lighting unit and frame, which may then run down on the outer wall of the aquarium. The occurrence of such effects does not constitute a defect in the product.
- Do not transport the aquarium when full.
- Make sure that maintenance of the aquarium does not damage the bonding.
- Do not use any toxic substances to clean the aquarium.

### **TIPP** JUWEL Backgrounds

For decorative designs on the rear wall of your JUWEL aquarium, we recommend the JUWEL rear walls and posters for various sizes of aquariums.

#### **JUWEL rear wall motifs**

With an attractive 3D rock motif that creates a powerful impression of depth.

#### **JUWEL textured rear walls**

With an attractive and distinctive bark texture.

#### **Juwel Conexo Adhesive**

The JUWEL motif and structure back panels are affixed to the rear wall of the aquarium using the special Conexo silicon before it is filled with water.

#### **JUWEL Posters**

JUWEL Posters are printed on both sides and provide attractive motifs to create a simple and highly effective background design for your aquarium.

#### **JUWEL Poster Fix**

JUWEL PosterFix is an oil that will enhance the three-dimensional effect of your film backgrounds. JUWEL PosterFix prevents unattractive light refraction, thus increasing the colours and structure of your motif to great effect. The poster can be easily removed.

**These JUWEL accessories are available from your specialist retailer.**



### Set-up suggestions for JUWEL aquariums

Let our sample designs inspire you; set up your aquarium in just a few steps.

Follow our step-by-step instructions to create wonderful underwater worlds. Naturally all our suggested set-ups can be used in every JUWEL aquarium. Watch the corresponding set-up video on our website and download the step-by-step set-up plan as a PDF file.



# Setting up your JUWEL Aquarium

Perform the following steps when putting the aquarium into operation:

1. Assemble the cabinet if necessary.
2. Arrange the inspected aquarium in a suitable place.
3. Affix the JUWEL structured backgrounds if necessary, please observe the drying time of between 48 and 72 hours.
4. Prepare the filter for operation as described in the chapter "Putting the JUWEL filter system into operation".
5. Complete the decoration with ground material etc. as desired.
6. Plant the short plant species in the aquarium if applicable.
7. Slowly fill the aquarium with water through the filter to half way up.
8. Plant higher plant species in the aquarium if applicable.
9. Slowly fill the aquarium with water through the filter up to the water level line.
10. Connect the circulating pump and the heater to the power supply.
11. Install the lamp unit and connect it to the power supply.
12. If appropriate, close the aquarium with the designated flaps.
13. We recommend introducing fish in steps. You may put in the first fish (4-5) after a few days. These also ensure that the biological filter develops. The run-in period of the filter may last 6 - 8 weeks. You may increase the number of fish in steps during this time.

## The JUWEL Bioflow ONE filter

The JUWEL filter Bioflow ONE is a highly effective biological filter system with components that are harmonized among each other in an ideal manner. Installing the filter in the aquarium makes hose connections unnecessary and prevents leaks. The pump output is not negatively affected by hose couplings, intake tubes etc. The pump capacity is dimensioned in such a manner that the biological filtering is ensured by a sufficient flow through the filter material in an ideal manner. The construction of the filter system enables you to quickly access the individual pump and filter medium components, facilitating comfortable operation while cleaning and maintaining the filter system. In addition to this, the JUWEL Bioflow ONE filter system offers the option of integrating the heater (optionally available).



## Commissioning of the JUWEL Bioflow ONE filter

You should make the filter ready for use before setting up the aquarium, but do not yet connect the electrical components to the power supply.

The JUWEL Bioflow ONE filter consists of:

- Pump
- Filter housing with slot for the heater (optionally available)
- 2 blue filter sponges - bioPlus fine ONE
- 4 suction cups
- O2 diffuser

Prior to initial use of the filter, open the filter housing and remove the filter sponges, in order to rinse them out under running water.

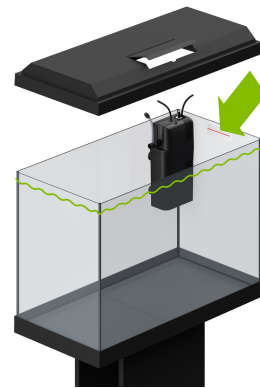
Reinsert the filter sponges into the filter housing and close it.

Now, insert the suction cups into the designated openings of the filter housing and attach the filter in the rear right corner of the aquarium.

Now, attach the O2 diffuser (with assembled air hose and controller) onto the pump outlet of the pump.

The JUWEL Bioflow ONE filter is now operational.

The JUWEL Aquarium Filter System is a biological filter system. For it to work effectively, bacteria cultures will need to grow inside the blue sponges. This process can take up 6-8 weeks for the filter to fully mature. Consequently we recommend to decorate and plant the aquarium and add just a few (3-5) hardy fish in order to help the maturation process. Please test the water on a weekly basis to monitor the water conditions and once the water is safe you can begin to add more fish.

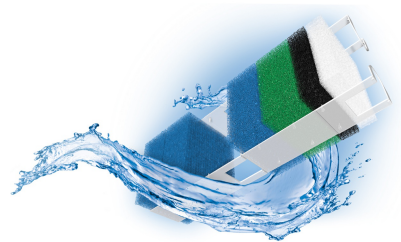


## Servicing and maintenance of the JUWEL Bioflow ONE filter

BioPlus fine ONE - Replace one of the blue filter sponges at an interval of approx. 3 months.

### Important:

Always use original JUWEL Aquarium filter media to ensure the optimum performance of your system.



## JUWEL AquaHeat - Operation and maintenance of the heater

The JUWEL Aquarium adjustable heater is an essential component of the JUWEL filter

system. It's positioning within the filter housing and consequently in the water stream facilitates even warming of the water in the aquarium, the Juwel AquaHeat is also particularly energy-saving.

You control the temperature of the water via the adjusting knob in the heater head. You may specify the temperature the heater is supposed to heat the water to in accordance with your individual requirements. The centre position between "+" and "-" corresponds to a water temperature of approximately 23 – 26°C or 74 – 78°F depending on the ambient temperature.

Please note that the JUWEL AquaHeat adjustable heater is designed to heat up to 8°C above room temperature. Please also note that depending on the starting temperature of the water in the aquarium, it may take approx. 12 hours and longer until the heater has heated the water to the desired temperature. After that, the heater will automatically keep the water at the desired temperature and switch on or off, accordingly. The red glowing lamp indicates that the heater is working.

We also recommend that you to check the temperature of the water by means of a thermometer at regular intervals. The heater does not require further care or maintenance.



### Recommendation:

The JUWEL automatic heater warms the water of your aquarium up to 28°C depending on a normal room temperature of 21°C. If you keep your aquarium in rooms below this or your fish need a higher temperature, we recommend to purchase a second heater.

### Safety instructions:

- Only connect the heater once the aquarium is filled with water at least to the minimum water level of the heater.
- Maximum operating depth 80 cm.
- Never use the heater outside the aquarium.
- Operate the heater indoors only.



### SAFETY INSTRUCTIONS:

- Always unplug the heater and allow it to cool before removing it from the filter.
- Never attempt to open or repair the heater. Any signs of damage or malfunction and the heater should be replaced with an original JUWEL Aquarium heater.
- Never repair the electrical cord or plug. In case of damage replace the complete heater.
- Once removed never place on a flammable surface.

### JUWEL DigitalThermometer 3.0

With the digital thermometer 3.0, you can check the water temperature in your aquarium conveniently and precisely. The thermometer is integrated perfectly into the JUWEL design and the large display allows for comfortable temperature readings.

The JUWEL DigitalThermometer 3.0 is available as an original accessory (Article Number 85703) for JUWEL aquariums.



## Maintenance of the JUWEL Eccoflow 300 pump

The JUWEL Eccoflow pump should be checked and cleaned at regular intervals (at least once a month).

Please proceed as follows to that end:

1. Disconnect all electrical devices that are operated inside the water from the power grid.
2. Remove the O2 diffuser from the pump outlet.
3. Remove the pump from the filter.
4. Disconnect the adapter (A) from the motor, by turning it anti-clockwise.
5. Remove the impeller and the axle with their rubber bearings from the motor.
6. Thoroughly clean all components.

It is necessary to remove the impeller from the chamber and remove deposits and dirt from the chamber itself as well as the impeller. Using the cleaning brush included with the pump for this purpose. Otherwise the functionality of the pump will be impaired. Also check the impeller for damage and possible signs of wear of the magnet.

7. After that, please reinstall the pump in reverse order in the filter. Before you reconnect the devices that are operated in the water to the power supply.



### Recommendation:

We recommend that you replace the parts subjected to wear and tear, e.g. the impeller, axle and the rubber axle holders, at intervals of approx. 12 months in order to ensure the optimum function and operating quietness of the pump. Inquire at your specialist retailer for assistance.



### SAFETY INSTRUCTIONS:

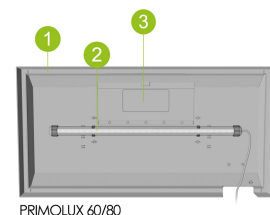
- Never operate the power head out of water.
- Always unplug the power head from the power supply before removing it from the filter.
- The power head is intended for indoor use and for use in fluids up to 35°C.
- Never repair the electrical cord or plug. In case of damage replace the complete power head.

## JUWEL PrimoLux 60 / 80

You achieve the optimum energy-saving lighting for your aquarium with the PrimoLux 60 / PrimoLux 80 cover light by JUWEL Aquarium, and it simultaneously offers you access to the aquarium for maintenance measures while being lit.

The PrimoLux 60 / PrimoLux 80 cover light by JUWEL Aquarium consists of

- Covering hood (1)
- JUWEL NovoLux LED with charger (2)
- Service hatch/es (3) for the supply of feed and water treatment agents etc.



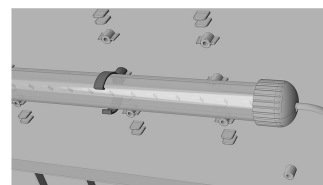
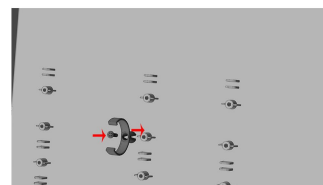
## Putting the PrimoLux 60 / Primolux 80 into operation.

Position the enclosed brackets onto the cover light mountings according to the illustration and screw them tight.

Now insert the NovoLux LEDs into the brackets and place the cover light on the aquarium.

Then insert the service hatch and connect the PrimoLux 60 / PrimoLux 80 to the power supply.

Ensure that the upper edge of the aquarium and the guide rails of the service hatch/es are free of foreign objects, e.g. sand or gravel.



## Maintenance and care JUWEL PrimoLux 60 / 80

The PrimoLux 60 / Primolux 80 cover light requires very little maintenance and attention.

If necessary, we recommend cleaning with a soft cloth and mild detergent.

During care and maintenance activities, always disconnect the Novolux LED from the power supply.



Lichtquelle austauschbar  
Exchangeable light source

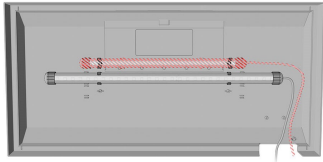


Betriebsgerät austauschbar  
Control gear interchangeable



**TIPP Tip:**

The PrimoLux 60 / Primolux 80 offers you the option of using additional NovoLux LEDs to enhance the illumination or achieve special colour effects in the aquarium. Inquire at your specialist retailer to that end.



**JUWEL SmartFeed 2.0 Futterautomat**

The JUWEL SmartFeed 2.0 is a convenient automatic feeder for granulate and flake feed with an extended range of functions.

Three different feeding intervals (24/48/72 hours), as well as the desired feeding time and quantity can be programmed individually (up to 8 levels). The device allows for up to 3 feedings per day. The feeder is equipped with a micro USB interface for external power supply.

The JUWEL SmartFeed 2.0 is available as an original accessory (Article Number 89020) for JUWEL aquariums.



### PrimoLux symbols



### NovoLux LED symbols



### Bioflow Filter symbols



### Filtermedia symbols



**PLEASE RECYCLE AS REQUIRED!**

Please do not hesitate to contact our competent administration if you have any questions.



## Proper disposal (electrical waste)

The labelling on the product or on the accompanying literature declares that it must not be disposed of, at the end of its service life, together with household rubbish. Please dispose of this equipment separately from other waste, to protect the environment or public health from damage by unregulated waste disposal.

Recycle the equipment and support the sustained recycling of material resources.

Private users should contact the dealer who sold them the product or the responsible authorities, for a demonstration on how to recycle the equipment in an environmentally friendly way.

## Guarantee

We guarantee the performance of the JUWEL-Aquarium product or its accessories to the purchaser for a period of 24 months from the date of purchase according to the following conditions:

### § 1 Extent of the guarantee

(1) This guarantee extends to the JUWEL-Aquarium product and its components excluding items subject to wear and tear such as T5 and T8 light tubes and filter media. It is limited to the product as such and does not cover damage to other property and/or individuals. In addition, the provisions of the product liability law apply. These provisions are not limited by the aforementioned arrangement.

(2) It is the prerogative of JUWEL-Aquarium to decide whether the guarantee is performed by means of repair or replacement. If neither repair nor replacement can ensure the performance of the JUWEL-Aquarium product the purchaser is entitled to demand a reduction in price or to return the product against repayment of the purchase price.

### § 2 Guarantee period and settlement procedure

(1) The guarantee period begins on the day of the purchase of the JUWEL Aquarium product from the retailer. Claims under this guarantee will not be honoured, if

(a) the damage is caused as a result of improper use or maintenance or nonobservance of the instructions given in this manual

(b) the product or its components have been maintained by persons or companies not authorised by the manufacturer to do so

(c) the product or its components have been damaged by mechanical means of whatsoever kind, in particular broken glass

(2) All claims under this guarantee have to be notified to the retailer, from whom the aquarium has been purchased without delay, however, not longer than 2 weeks from the day of first occurrence of defects. Rights under the consumer protection laws will remain unaffected.

(3) Guarantee claims will only be accepted if the validity of the claim is supported by evidence of purchase of the JUWEL-Aquarium product. This declaration of guarantee is a translation only. In case of doubts the original German language version prevails.

We reserve the right to make technical alterations.

### © JUWEL AQUARIUM

® JUWEL, Trigon, Vision, Rekord, Rio, Lido, Vio, Primo, Korall, MonoLux, DuoLux, MultiLux, KorallLux, Violux, NovoLux, PrimoLux, SeaSkim, EccoSkim AquaHeat, EasyFeed, SmartFeed, High-Lite, Warm-Lite, Colour-Lite, Day-Lite, Juwel Twin-Lite, HiFlex, SmartControl, Juwel Ecoflow, Bioflow, Cirax, Nitrox, Phorax, Carbox, BioPad, BioCarb, BioPlus, bioBoost, OxyPlus, Silexo, Conexo.

JUWEL AQUARIUM AG & CO. KG

Karl-Göx-Straße 1 27356 Rotenburg/Wümme . GERMANY

Telefon +49(0)42 61/93 79-32

Telefax +49(0)42 61/93 79-856

Service-Mail [service@juwel-aquarium.de](mailto:service@juwel-aquarium.de)

JUWEL AQUARIUM UK Branch

Gateway 11 Business Park

Penfold Drive, Wymondham Norfolk NR18 0WZ

Tel.: 01953 606 363 Fax: 01953 603 839

E-Mail: [info@juwel-aquarium.co.uk](mailto:info@juwel-aquarium.co.uk)

Service-Mail: [info@juwel-aquarium.co.uk](mailto:info@juwel-aquarium.co.uk)

This product contains light sources of the energy efficiency classes:

## PrimoLux LED

NovoLux LED 60  
Primo 60 LED



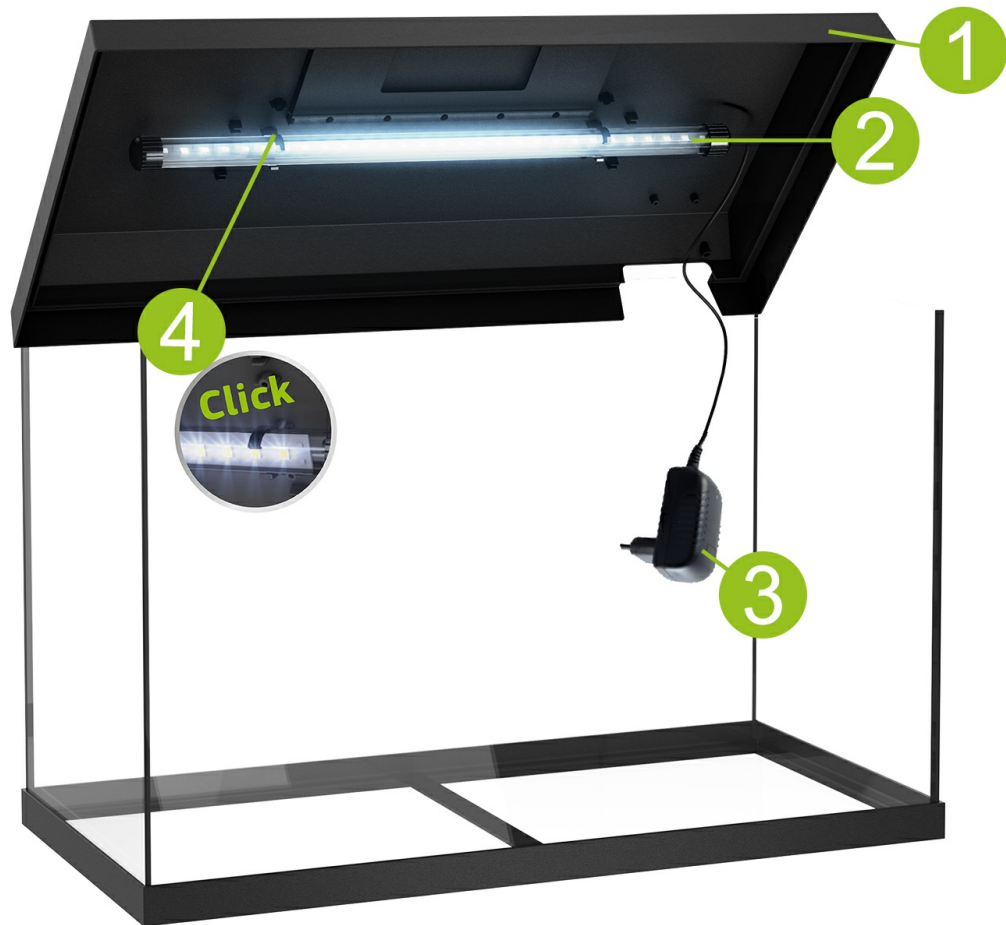
NovoLux LED 60  
Primo 70 LED



NovoLux LED 80  
Primo 110 LED



**AQUARIUM PASS**  
**Primo 60/70**



1



1

Primo 110



2



3



4



	Primo 60 & 70	Primo 110
	Product Code	Product Code
1.	black:	black:
	INT: 36360	INT: 36380
	AU: 36363	AU: 36383
	UK: 36362	UK: 36382
	white:	---
	INT: 36460	---
	AU: 36463	---
	UK: 36462	---
2.	49260	49280
3.	49205	49205
4	49200	49200



## FILTERPASS Primo 60/70



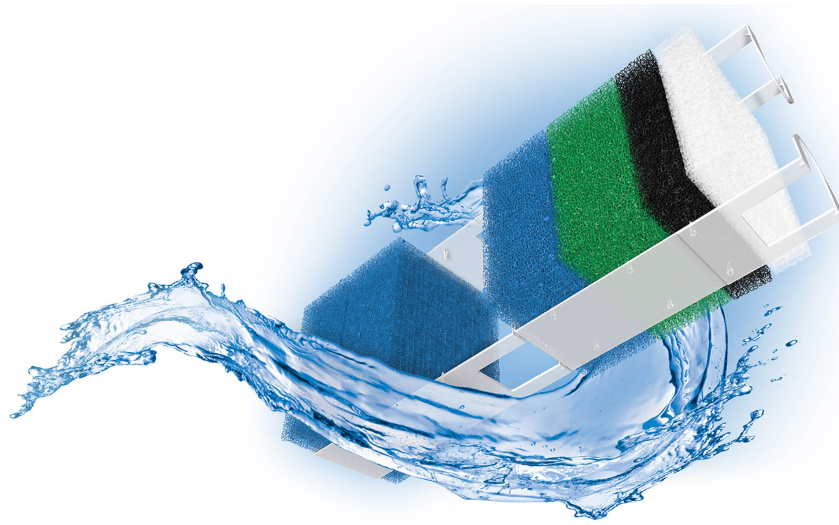
[www.juwel-aquarium.com](http://www.juwel-aquarium.com)



Aquarium	Primo 60 & 70
Filter Type	Bioflow ONE
	Product Code
1.	Eccoflow 300
	INT: 85751
	UK: 85761
	AU: 85771
2.	85092
3.	AquaHeat 50 W
	INT: 85600
	UK: 85800
	AU: 85850
4.	85990



## **FILTERMEDIA** **Primo 60/70**



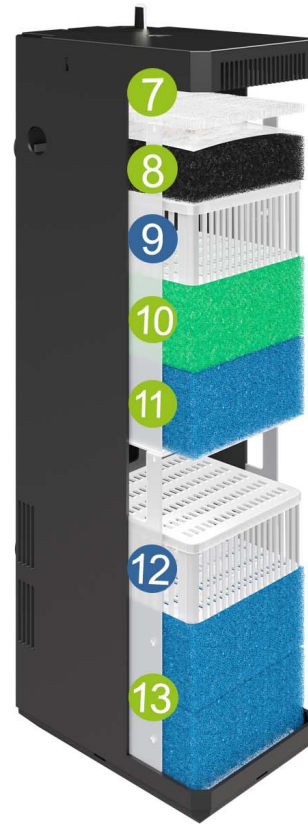
[www.juwel-aquarium.com](http://www.juwel-aquarium.com)



## Bioflow ONE

## Bioflow Super

## Bioflow M, L, XL



Aquarium:		Primo 60 & 70	Primo 110	Rio 125, 180, 240 / Lido 120, 200/ Vision 180/ Trigon 190	Rio 350/ Vision 260	Rio 450/ Vision 450/ Trigon 350
Filter Type:		Bioflow ONE	Bioflow Super	Bioflow M	Bioflow L	Bioflow XL
		Product Code	Product Code	Product Code	Product Code	Product Code
7.	bioPad	-	88038	88049	88099	88149
8.	bioCarb	-	88037	88059	88109	88159
9.	Carbox	-	88058	88058	88108	88158
10.	Nitrax	-	88055	88055	88105	88155
11.	bioPlus coarse	-	-	88050	88100	88150
12.	Amorax	-	88054	88054	88104	88154
	Cirax	-	88056	88056	88106	88156
	Phorax	-	88057	88057	88107	88157
13.	bioPlus fine	88021	88051	88051	88101	88151